

# Fire Extinguisher Explosion on DZ 28

Friday Nightshift 7<sup>th</sup> May 2010

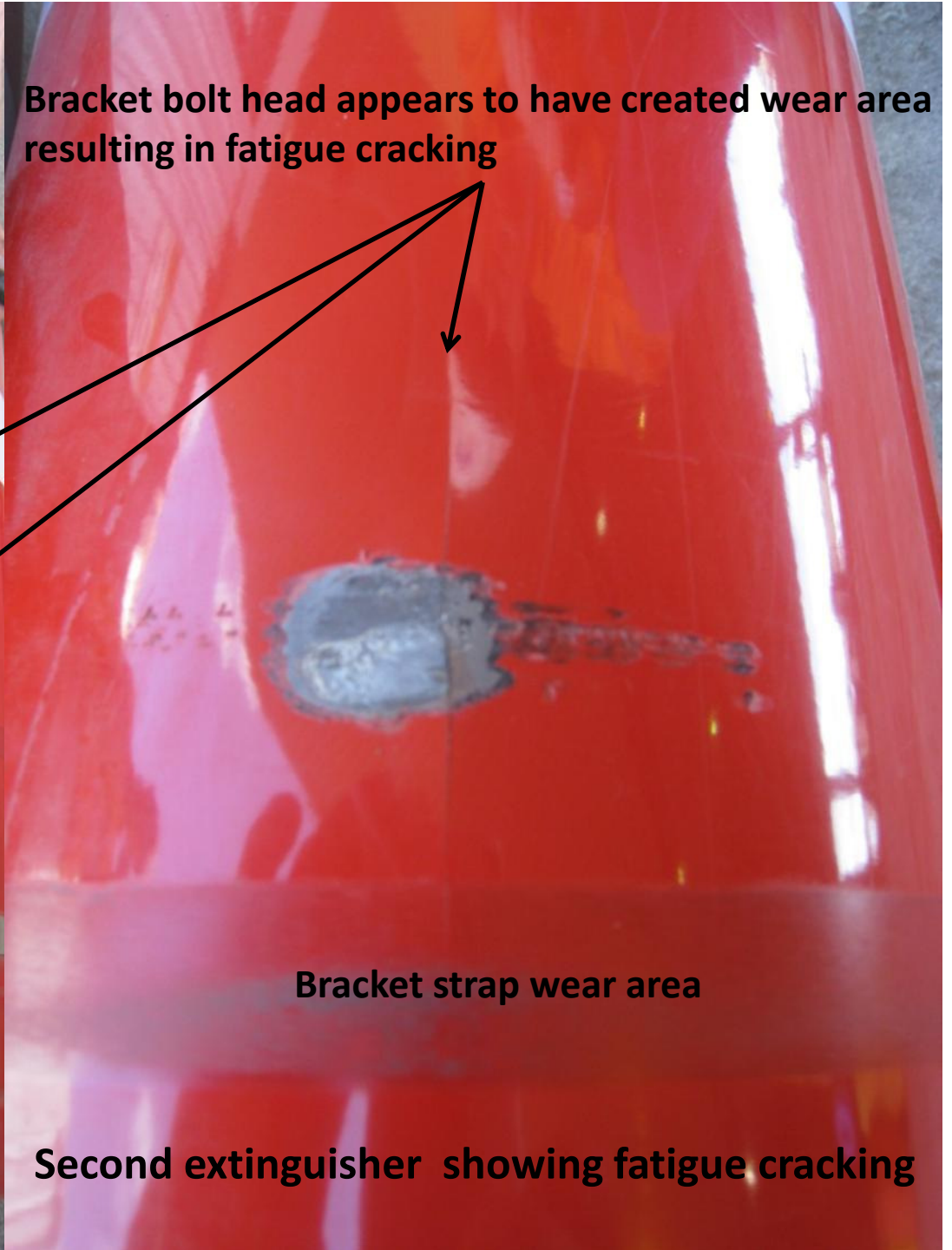
D Crew







**Bracket bolt head appears to have created wear area resulting in fatigue cracking**

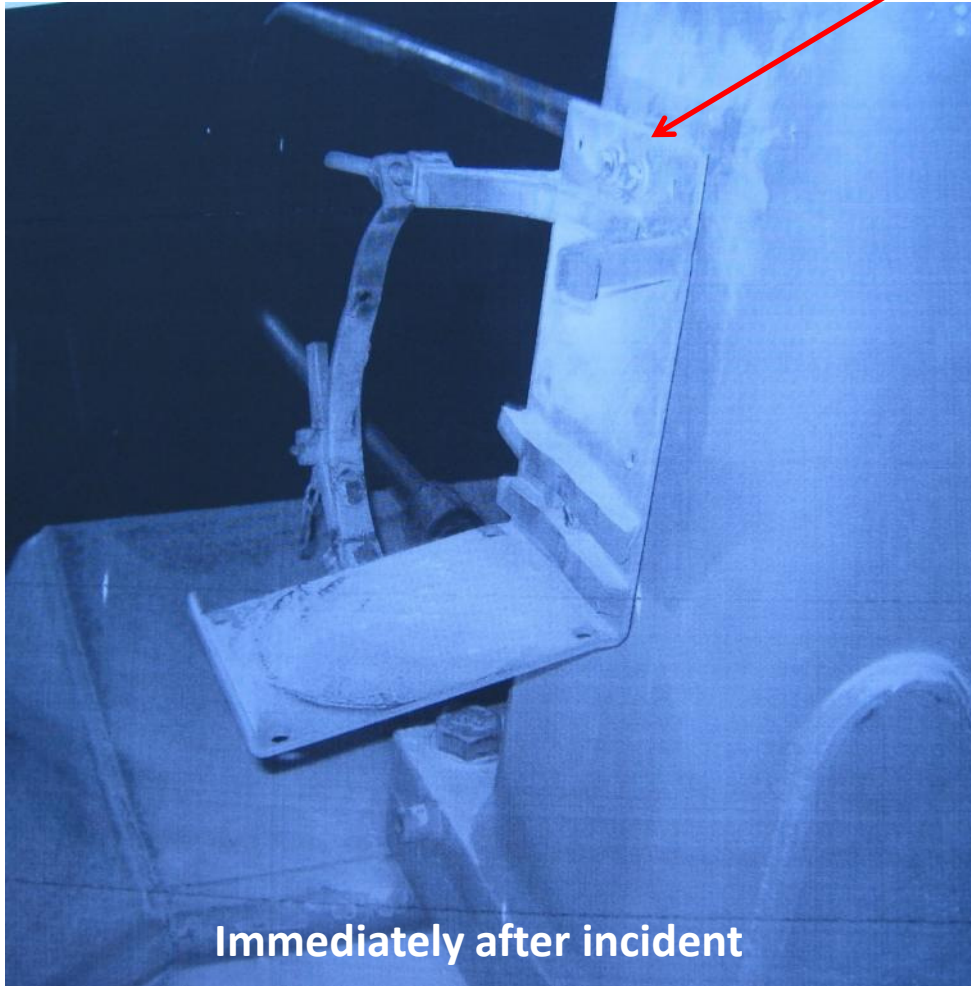


**Bracket strap wear area**

**Second extinguisher showing fatigue cracking**

# Actual Bracket Involved

## Arrows point to bolt location







**Fatigue cracking**

**Third extinguisher showing wear from  
bracket strap rubbing**

Alternate bracket design showing  
adequate gap between bolt heads and  
extinguisher

